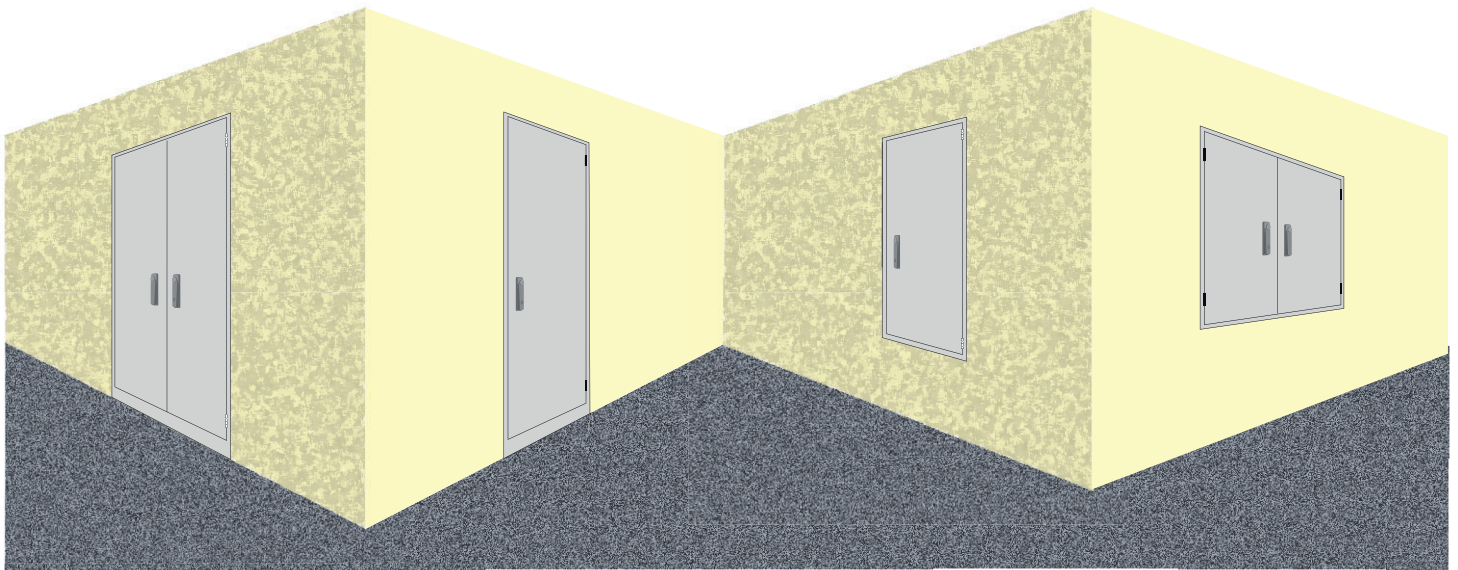


Fire Resistant Revision Covers

SECURUS® RV



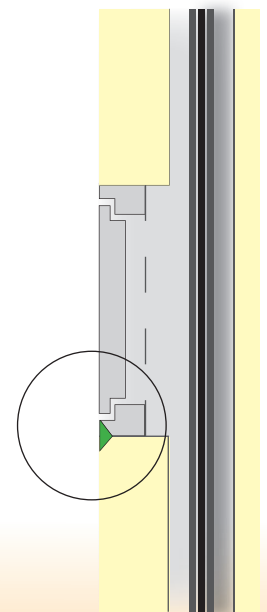
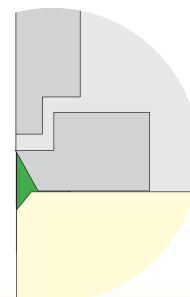
SECURUS RV-UPT

Revision cover for flush mounted installation into the wall opening, providing a smooth continuous wall surface.

SECURUS RV-UPT-AK

Version with plastering edge to hide the frame. Only the door leaf is visible.

Compound
seam from
gypsum



Wall Installation W/S-UPT(-AK) 30

General building approval No. Z-6.55-2336 Fire resistance duration 30 min. (fire retardant)

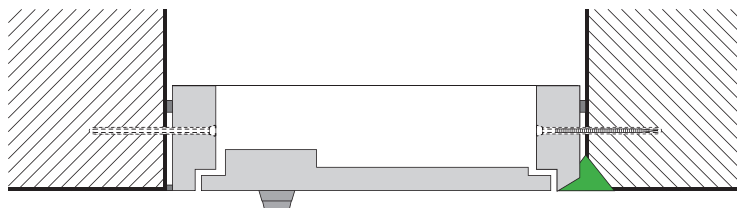


Applicable Wall Types

(See building approval for detailed descriptions)

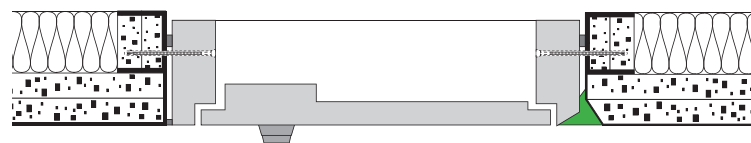
Massive Walls

Installation shafts in solid construction from masonry or concrete or reinforced concrete steel with at least 100 mm thickness.



Shaft Walls with Mineral Wool

Installation shafts from studwall constructions panelled on one side with non-combustible chipboards. The laterally adjoining stud wall profiles must receive a storey-high filling with non-combustible fire-protection boards. In addition, the cavities between stud wall and bar profile elements must be filled with mineral wool approved for this purpose.



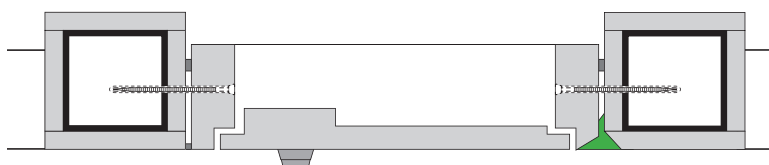
Lightweight Partition Walls

Installation shafts from studwall constructions panelled with two non-combustible fire-protection boards on both sides and in the reveal.



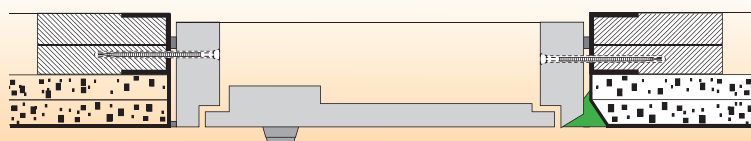
Cladded Steel Supports

Steel supports, which are circumferentially clad with non-combustible chipboards and are part of an installation shaft wall.



Shaft Walls

Installation shafts from studwall constructions panelled on one side with non-combustible chipboards. Storey-high filling with stripes from special fire-protection panels (available at EAS). Filling with mineral wool approved for this purpose is an option.



Wall Installation W/S-UPT(-AK) 90

General building approval No. Z-6.55-2167 Fire resistance duration 90 min. (fire proof)

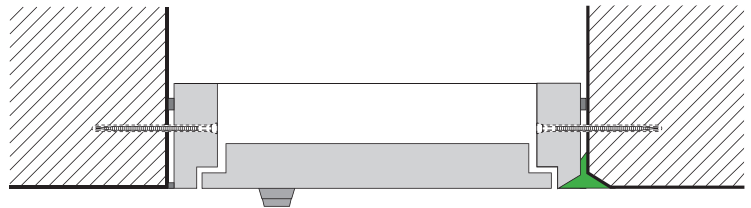


Applicable Wall Types

(See building approval for detailed descriptions)

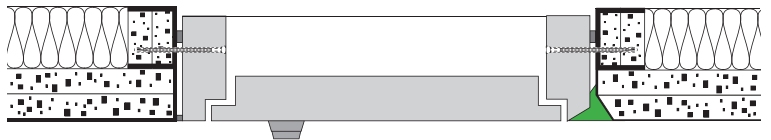
Massive Walls

Installation shafts in solid construction from masonry or concrete or reinforced concrete steel with at least 100 mm thickness.



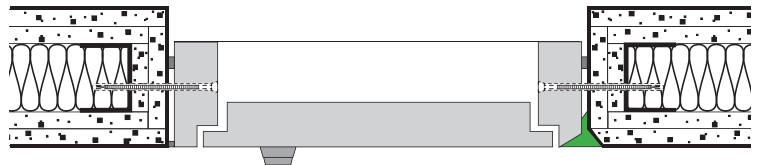
Shaft Walls with Mineral Wool

Installation shafts from studwall constructions panelled on one side with non-combustible chipboards. The laterally adjoining stud wall profiles must receive a storey-high filling with non-combustible fire-protection boards. In addition, the cavities between stud wall and bar profile elements must be filled with mineral wool approved for this purpose.



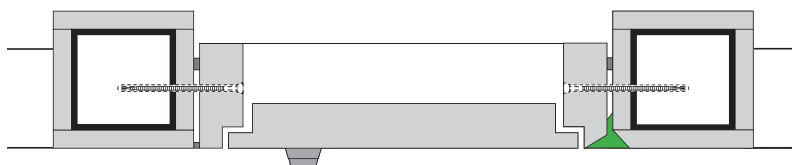
Lightweight Partition Walls

Installation shafts from studwall constructions panelled with two non-combustible fire-protection boards on both sides and in the reveal.



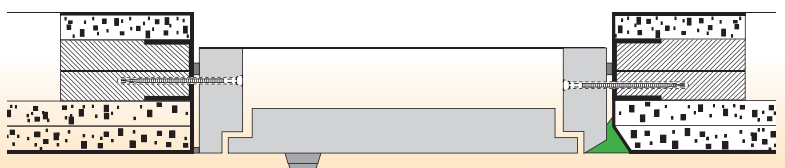
Cladded Steel Supports

Steel supports, which are circumferentially clad with non-combustible chipboards and are part of an installation shaft wall.



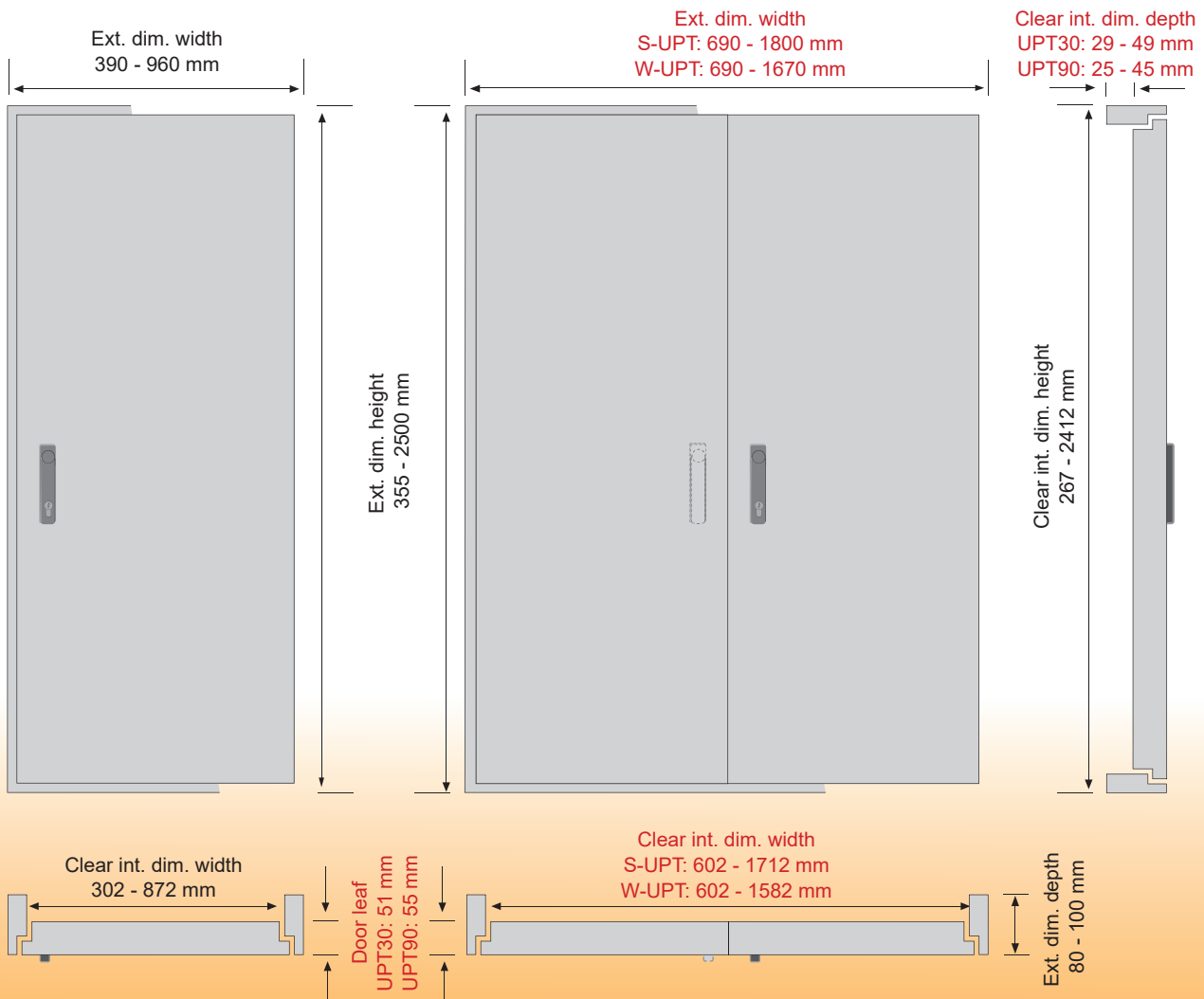
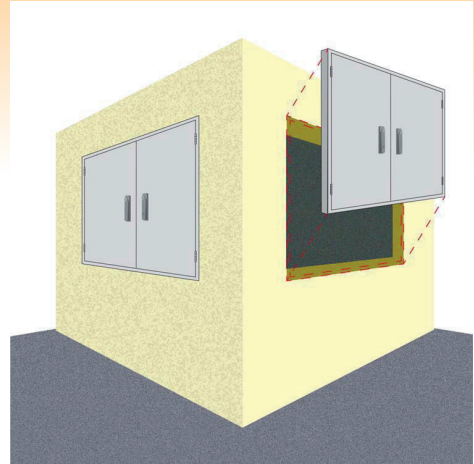
Shaft Walls

Installation shafts from studwall constructions panelled on one side with non-combustible chipboards. Storey-high filling with stripes from special fire-protection panels (available at EAS). Filling with mineral wool approved for this purpose is an option. **Additional chipboard stripes are needed for the inside of the shaft in the area of the reveal opening like those which are used for the panelling of the installation shaft walls.** Filling with mineral wool approved for this purpose is an option.



Construction / Execution / Dimensions

- Flush in-wall installation
- Unit consisting of a frame construction with a single- or double-leaf door element
- Version UPT-AK with additional plastering edge
- Multi-layer material combination
- All building materials including coatings were examined as a compound and are classified as non-combustible according to DIN EN 13501-1 (A2 s1d0) standard
- All-round fire and smoke sealing system in the frame rebate
- Single- or double-leaf door, flush-mounted in frame element, door opening angle 180°
- Door stop right hinged (left hinged on request), double-leaf door right and left hinged
- Door unhingeable by stainless steel hinges with removable pin
- Lock with turning lever for DIN half-cylinder (further lock types on request)
- On request with emergency opening facility at the inside of the door (for being used in walkable shafts)
- EAS ventilation system as an optional extra
- EAS decor programme offering a wide selection of high quality colours, surfaces and textures to realise individual design concepts
- Doors can be aligned and connected adjacent to each other to cover larger wall openings (see our leaflet „Revision Cover Wall System SECURUS RV-STW90“)
- Our revision doors fulfill the requirements regarding protection against falling
- Line load bearing is approved



Subject to alterations.
We do not assume liability for printing or typographical errors.
Please see our commercial terms and conditions.